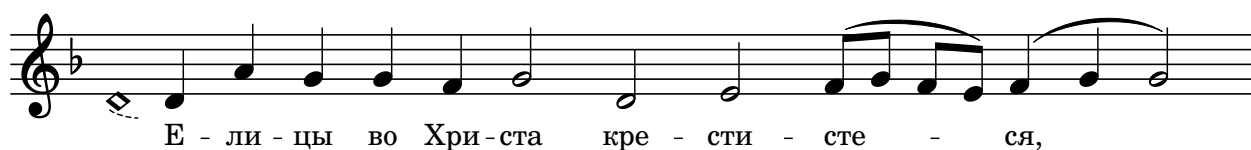


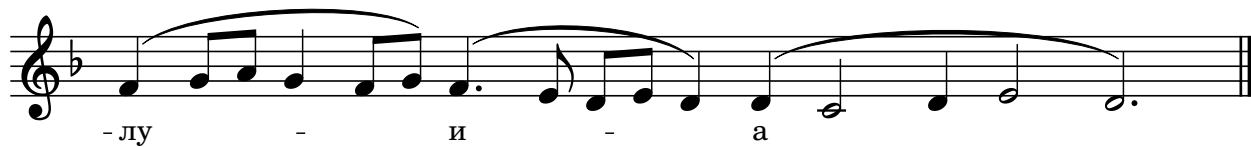
Елицы во Христа крестистесь, 1-й глас





во Хри - ста об - ле - ко - сте - ся, ал - ли -

The first line of musical notation is written on a single staff in a treble clef with a key signature of one flat (B-flat). The melody consists of quarter and eighth notes, with some notes beamed together. The lyrics are written below the staff, aligned with the notes.



- лу - и - а

The second line of musical notation continues the melody from the first line. It features a long, sweeping phrase with a slur over several notes, ending with a double bar line. The lyrics are written below the staff, aligned with the notes.