

Ѳктенїа просїтельнаѧ

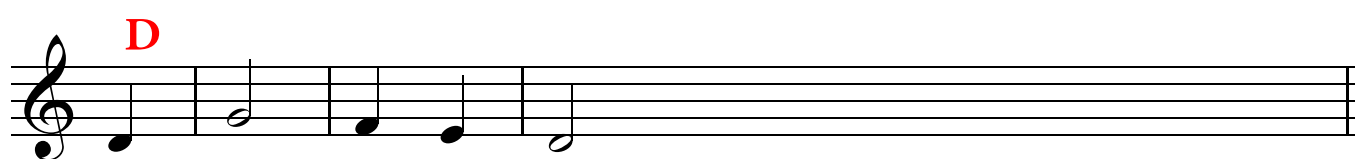
Гласъ ѧ



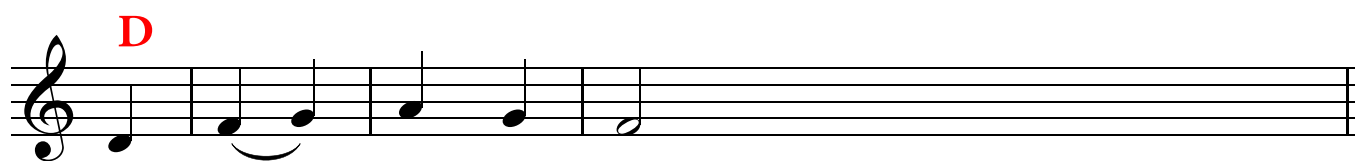
Гó - спо - ди, по - мнѣ - лѣи.



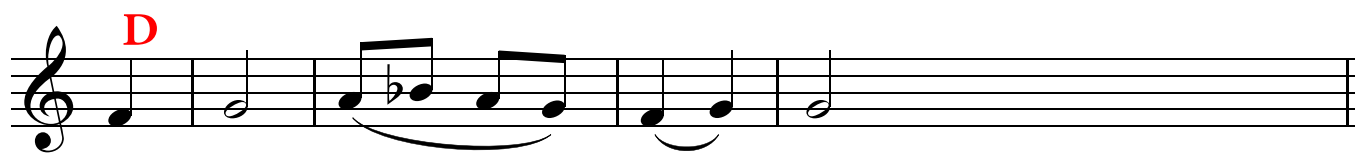
Гó - спо - ди, по - мнѣ - лѣи.



По - дѣи, гó - спо - ди.



По - дѣи, гó - спо - ди.



По - дѣи, гó - спо - ди.



По - дѣи, гó - спо - ди.



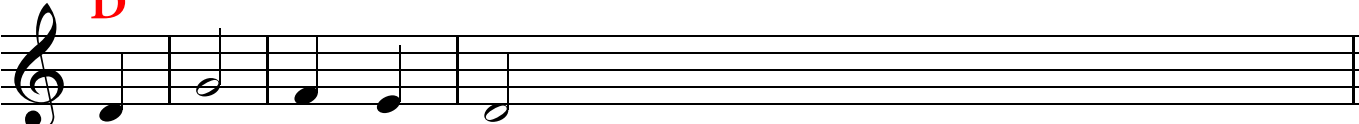
По - дѣи, гó - спо - ди.



По - дѣи, гó - спо - ди.


2

D



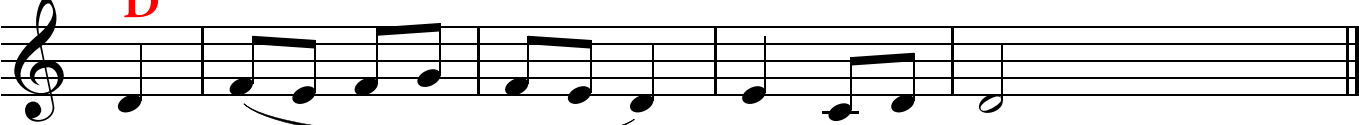
Τε - βῆ, γό - επο - δι.

D C D



Ἡ ἀρ - χο - νη τβο - ε - μῶ.

D



Τε - βῆ, γό - επο - δι.