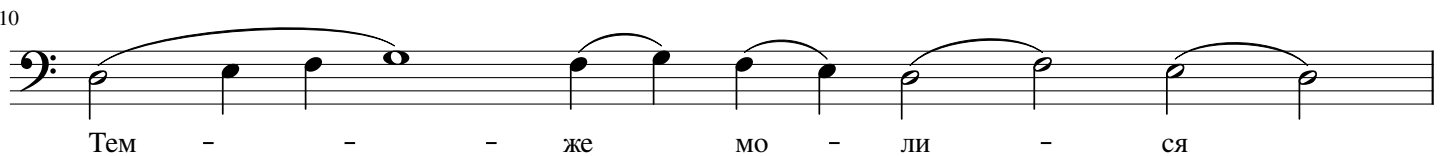
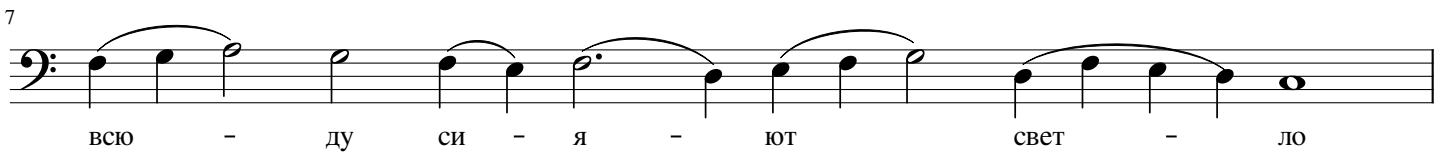
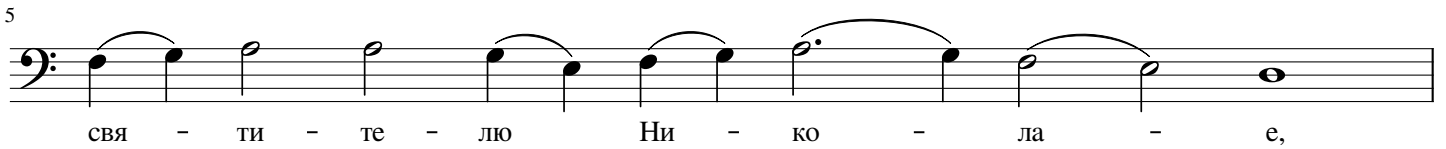
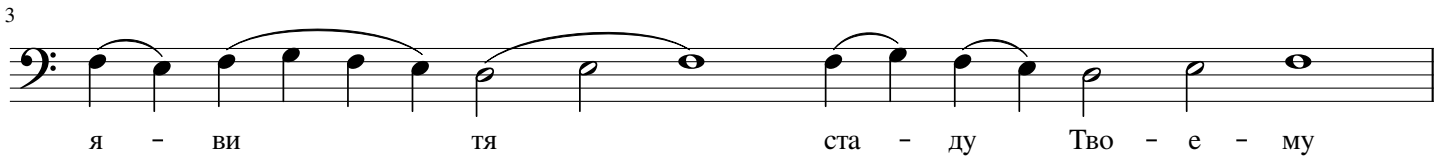
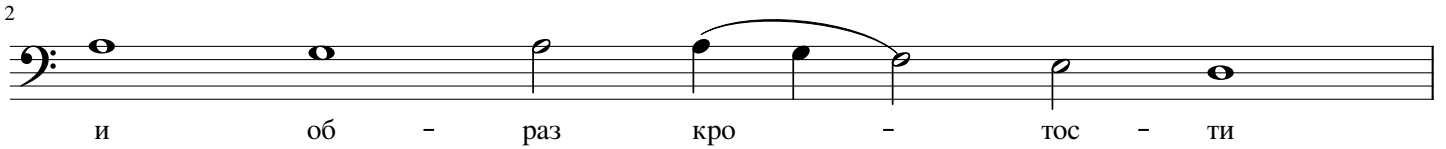
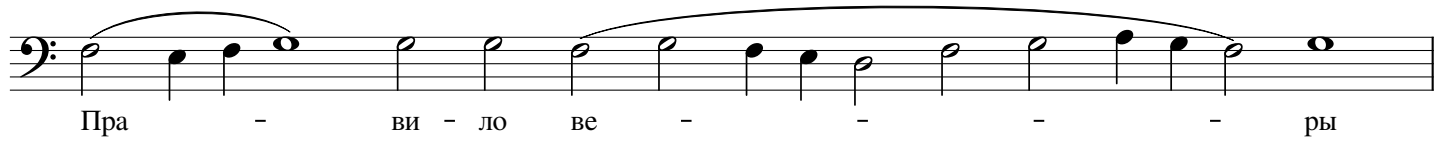


# Стихира на литии свт. Николаю

2 глас, знаменный распев

и. Н.



11



не - пре - стан - - - - но

Musical notation for line 11: A single staff in bass clef with a long melisma line above it. The notes are: G2, A2, B2, C3, D3, E3, F3, G3, A3, B3, C4, D4, E4, F4, G4, A4, B4, C5. The lyrics are: не - пре - стан - - - - но.

12



спас - ти - - - ду - ши на - - - ша

Musical notation for line 12: A single staff in bass clef with melisma lines above it. The notes are: G2, A2, B2, C3, D3, E3, F3, G3, A3, B3, C4, D4, E4, F4, G4, A4, B4, C5. The lyrics are: спас - ти - - - ду - ши на - - - ша.