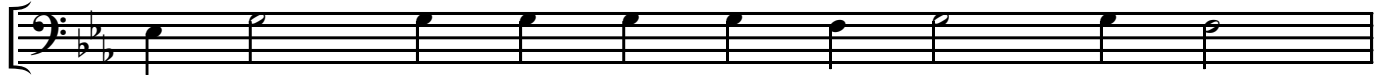


# Досто́йно е́сть

Знаменный распев.  
Изложение: Гончаров И.Н.

Канонарх (Басы)



До - стой - но е́сть я - ко во - ис - ти - ну



бла - - - жи - ти Тя, Бо - го - ро - ди - цу,



При - сно - бла - жен - ну - ю и Пре - не - по - роч - ну - ю



и Ма - терь Бо - га на - ше - го.

Хор

Musical notation for the Chorus part, first line. It consists of two staves: a treble staff and a bass staff. The treble staff has a treble clef, a key signature of one flat (B-flat), and a 4/4 time signature. The bass staff has a bass clef, a key signature of one flat (B-flat), and a 4/4 time signature. The melody is written in a simple, rhythmic style.

Чест - ней - - - шу - ю Хе - ру - вим

Musical notation for the Chorus part, second line. It consists of two staves: a treble staff and a bass staff. The treble staff has a treble clef, a key signature of one flat (B-flat), and a 4/4 time signature. The bass staff has a bass clef, a key signature of one flat (B-flat), and a 4/4 time signature. The melody continues from the first line.

и слав - ней - шу - ю без срав - не - ни - я Се - ра - фим,

Musical notation for the Chorus part, third line. It consists of two staves: a treble staff and a bass staff. The treble staff has a treble clef, a key signature of one flat (B-flat), and a 4/4 time signature. The bass staff has a bass clef, a key signature of one flat (B-flat), and a 4/4 time signature. The melody continues from the second line.

без ис - тле - ни - я Бо - га Сло - ва рожд - шу - ю,

Musical notation for the Chorus part, fourth line. It consists of two staves: a treble staff and a bass staff. The treble staff has a treble clef, a key signature of one flat (B-flat), and a 4/4 time signature. The bass staff has a bass clef, a key signature of one flat (B-flat), and a 4/4 time signature. The melody continues from the third line.

су - щу - ю Бо - го - ро - ди - цу Тя ве - ли - ча - ем.